


Salud Foodgroup Europe	Product specification	
	<p align="center"><b>55FLATS30</b>  <b>Wheat tortilla amb 30cm</b>  <b>6x18 pcs</b></p>	<p>Page: 1 of 7  Version: 0002  Date: 09-08-2024  Written by: C. Oprins</p>

## 1. Product photo



## 2. Product description

Wheat tortilla from rounded piece of dough, creamy colour with brown bake marks on both surfaces (on the top side bake marks are bigger). Round shape.

## 3. Process description

The dough is mixed, divided, rested, pressed, baked, cooled down and packed.

## 4. Variety / origin

Packed in the Netherlands


## 5. General requirements

All products must be manufactured under conditions consistent with Good Manufacturer Practices and must conform to all requirements outlined in EU legislation. Use of pesticides, herbicides and fungicides using any stage of growing/ harvesting of products will be registrated as to type. Usage will be in accordance with current regulations by the EU legislations and residues on the product will not exceed those limits established by EU legislation.

All products are no subject to ionization.

## 6. Organoleptic characteristics

<b>Parameter</b>	<b>Value</b>
Overall appearance	Round shape, no ragged edges, visible bake marks
Taste	Typical for these types of products. Fresh, no off
Smell	taste
	Typical for wheat flour tortillas. Fresh, no off smell
Consistency	Porous, visible layers, flexible
Colour	White to creamy with brown bake marks

Salud Foodgroup Europe	Product specification	
	<b>55FLATS30</b> <b>Wheat tortilla amb 30cm</b> <b>6x18 pcs</b>	Page: 2 of 7 Version: 0002 Date: 09-08-2024 Written by: C. Oprins

## 7. Product codes

Article code	55FLATS30
GTIN code inner unit	8717154054071
GTIN code case	8717154054088
Statistic/tariff code	1905908000

## 8. Ingredients

**WHEAT** flour 60%, water, rapeseed oil, stabiliser: E422, sugar, acidity regulator: E296, raising agent: E500, salt, preservative: E282, E202, emulsifier: E471.


- The source of emulsifier E471 is from a vegetable origin and not sourced from animal derivatives.

## 9. Nutritional values (per 100 g)

Parameter	Value per 100 g	Unit
Kjoule	1313	kJ
Kcal	311	kcal
Fat, total (of which)	6,4	gr
- Saturated fatty acids	1,5	gr
- Mono unsaturated fatty acids	2,4	gr
- Poly unsaturated fatty acids	1,3	gr
- Trans fatty acids	0,0	gr
cholesterol	<10,0	mg
Total carbohydrates (of which)	52,0	gr
- Sugar	1,5	gr
Fibre	4,4	gr
Protein	9,0	gr
Sodium	320	mg
Salt	0,80	gr

## 10. Microbiological standards

Parameter	Value	Unit
Total plate count	:< 100.000	Cfu/g
Yeast	:< 10.000	Cfu/g
Moulds	:< 10.000	Cfu/g
Enterobacteriaceae	:< 1.000	Cfu/g
Staphylococcus Aureus	:< 1.000	Cfu/g
Bacillus cereus	:< 1000	Cfu/g
Listeria Monocytogenes	:< 100	Cfu/g
Salmonella	:absent / 25 g	

Salud Foodgroup Europe	Product specification	
	<b>55FLATS30</b> <b>Wheat tortilla amb 30cm</b> <b>6x18 pcs</b>	Page: 3 of 7 Version: 0002 Date: 09-08-2024 Written by: C. Oprins

### 11. Storage requirements

Product temperature throughout all phases of storage and shipping will be ambient and dry (15-25°C). Protect from heat or temperature differences. Keep direct packaging closed. Store dry. Protect from heat.

### 12. Shelf life

Store in a cool and dry place.

Closed packaging: after production date: 15-25°C: 6 months.

Opened packaging: After opening, use immediately or store covered up in a refrigerator (max. +7°C) for max. 3 days.

### 13. Foreign material standards

- Product shall be free of all foreign material
- Product will pass through a functional metal detector with a positive rejection device.

### 14. Preparation instructions

Directly to consume.



In order to facilitate separation of tortillas from each other, bend closed package up and down.

#### Micro wave:

Heat the tortilla's for 10-15 seconds at 650 Watt.

#### Grill/pan:


Heat the tortilla's separately for 10-15 seconds both sides.

### 15. Physical standards

Parameter	Value (range)	Unit
Diameter	30 (28,5 - 30,5)	cm
Piece count / bag	18	pieces
Weight	1650 (1600,5 - 1762)	gram

### 16. Chemical standards

Parameter	Value (range)	Unit
Aw	Max 0.93	
Moisture determination	28 - 34	%
pH	5,6 (5,4 - 5,8)	

Salud Foodgroup Europe	Product specification	
	<b>55FLATS30</b> <b>Wheat tortilla amb 30cm</b> <b>6x18 pcs</b>	Page: 4 of 7 Version: 0002 Date: 09-08-2024 Written by: C. Oprins


## 17.Characteristics

Vegetarian  
non-GMO  
Vegan

## 18.Allergy data


	Allergens (by legislation)	Present / Absent
1.1	wheat	+
1.2	rye	-
1.3	barley	-
1.4	oats	-
1.5	spelt	-
1.6	kamut	-
1	<i>Gluten</i>	
2.0	crustaceans	-
3.0	egg	-
4.0	fish	-
5.0	peanuts	-
6.0	soy	-
7.0	milk	-
8.1	almonds	-
8.2	hazelnuts	-
8.3	walnuts	-
8.4	cashews	-
8.5	pecan nuts	-
8.6	Brazil nuts	-
8.7	pistachio nuts	-
8.8	macadamia nuts	-
8	<i>Nuts</i>	
9.0	celery	-
10.0	mustard	-
11.0	sesame	-
12.0	sulphur dioxide and sulphites	-
13.0	lupin	-
14.0	molluscs	-
	<b>Additional allergens</b>	<b>Present / Absent</b>
20.0	lactose	-
21.0	cocoa	-
22.0	glutamate (E620-E625)	-
23.0	chicken meat	-
24.0	coriander	-
25.0	corn	-
26.0	legumes	-
27.0	beef	-
28.0	pork	-
29.0	carrot	-

+ Present | - Absent | +/- May contain | ? Unknown

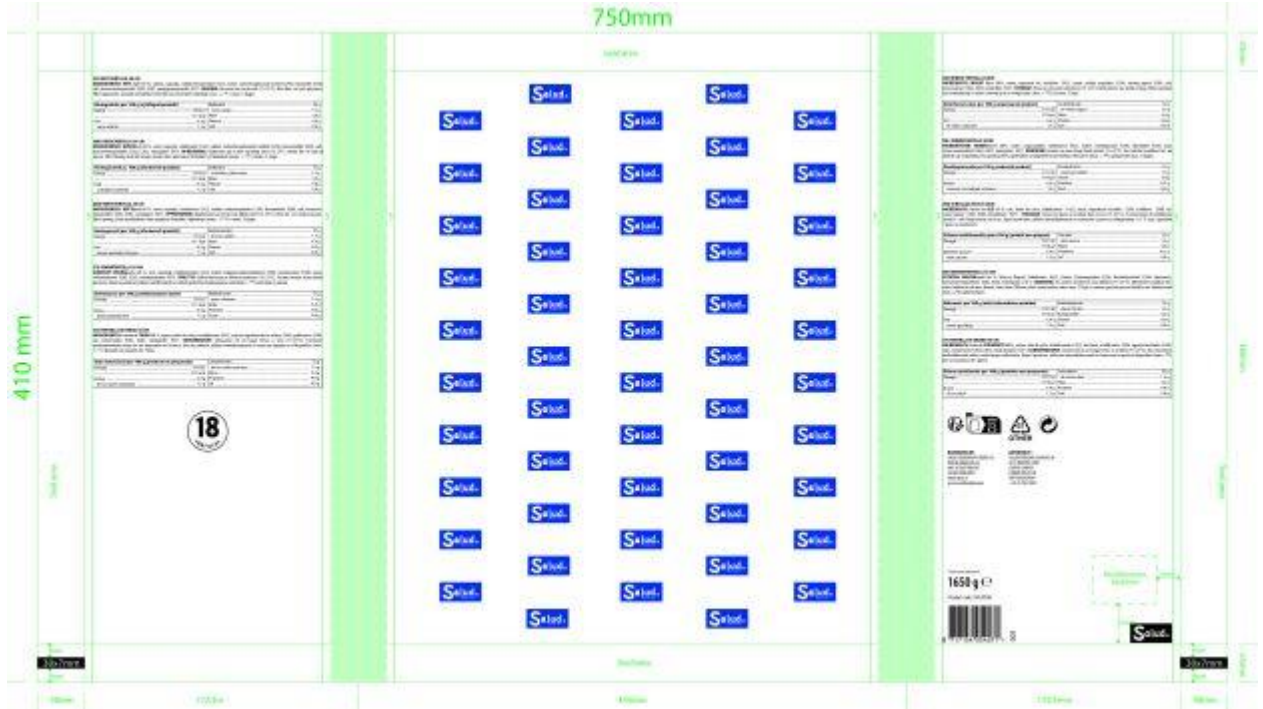
Salud Foodgroup Europe	Product specification	
	<p align="center"><b>55FLATS30</b>  <b>Wheat tortilla amb 30cm</b>  <b>6x18 pcs</b></p>	Page: 5 of 7 Version: 0002 Date: 09-08-2024 Written by: C. Oprins

## 19. Packaging information

Parameter	Value
<b>INNER PACKAGING</b>	
Material thickness	42 µ
Material inner packaging	LDPE/PET
Size inner packaging LxWxH (external)	400 x 340 x 35 mm
Net weight	1650 g
Gross weight	1665 g
<b>OUTER PACKAGING</b>	
Case material	Cardboard
Case weight	904 g
Material thickness	7 mm
Case size LxWxH (external)	593 x 353 x 155 mm
Inner packagings / case	6
Net weight	9,90 kg
Gross weight	10,89 kg
<b>PALLETISATION</b>	
Pallet type	EURO
Layers / pallet	11
Cases / pallet	44
Net weight	435,6 kg
Gross weight (inc. pallet)	499 kg
Dimensions (ex. pallet) LxWxH	1200 x 800 x 1705 mm
<b>PALLETISATION (2nd option)</b>	
Pallet type	UK
Layers / pallet	11
Cases / pallet	55
Net weight	544,5 kg
Gross weight (inc. pallet)	624 kg
Dimensions (ex. pallet) LxWxH	1200 x 1000 x 1705 mm

Salud Foodgroup Europe	Product specification	
	<p align="center"><b>55FLATS30</b>  <b>Wheat tortilla amb 30cm</b>  <b>6x18 pcs</b></p>	<p>Page: 6 of 7  Version: 0002  Date: 09-08-2024  Written by: C. Oprins</p>

## 20. Picture inner packaging



## 21. Picture outer packaging

### 6 x 18 WHEAT TORTILLAS AMBIENT 30 cm 9,9 kg (6 x 1,65 kg)

GB Store and transport products ambient (15-25°C)

Best before date: see date on case.

NL Opslag en transport bij kamertemperatuur (15-25°C)

Ten minste houdbaar tot: zie doos.

FR Conservation et transport à température ambiante (15-25°C)

A consommer préférentiellement avant le : voir carton.

DE Bei Zimmertemperatur aufbewahren und transportieren (15-25°C)

Mindestens haltbar bis: siehe Halbarkeitsdatum.

IT Conservare e di trasporto a temperatura ambiente (15-25°C)

Da consumare preferibilmente: vedere data di scadenza.

ES Guardarse y transporte a temperatura ambiente (15-25°C)

Fecha de caducidad: ver fecha de vencimiento.

PD: 03/05/2024 11:51 Lot:

EXP: ??/??/????

Productcode: 55FLATS30

PT Conservar e transportar os produtos à temperatura ambiente (15-25°C)

Prazo de validade: ver data na embalagem.

FI Säilytä ja kuljeta tuotteita ympäristön (15-25°C)

Parasta ennen: kts. parasta ennen päivystä.

NO Store og transport produkter ambient (15-25°C)

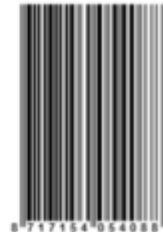
Best før: se holdbarhetsdato.

SE Förvara och transportera produkter omgivande (15-25°C)

Bäst före datum: se hållbarhetsdatum.


DK Opbevar og transport produkter ved stuetemperatur (15-25°C)

Bedst før-dato: De sieden på kassen.



Packed in the Netherlands  
Distributed by:  
Salud Foodgroup Europe B.V.  
WILHELMINALAAN 53  
4905 AT OOSTERHOUT  
THE NETHERLANDS  
info@salud.nl  
www.saludfoodgroup.eu

Imported by:  
Salud Foodgroup Europe UK  
60 ST MARTINS LANE  
COVENT GARDEN  
LONDON WC2N 4LS  
UNITED KINGDOM  
+44 20 3963 3032

Salud Foodgroup Europe	Product specification	
	<p><b>55FLATS30</b>  <b>Wheat tortilla amb 30cm</b>  <b>6x18 pcs</b></p>	<p>Page: 7 of 7  Version: 0002  Date: 09-08-2024  Written by: C. Oprins</p>

## 22. Recycle logo (FR)

